

Klausurergebnisse Stochastik

Notenskala

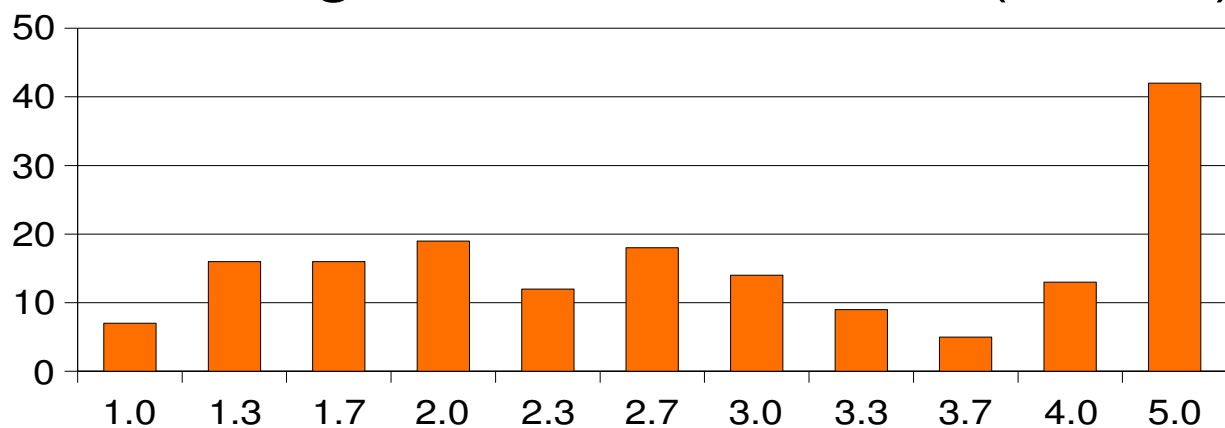
Punkte Note

| | |
|--------|-----|
| 96-100 | 1.0 |
| 91-95 | 1.3 |
| 86-90 | 1.7 |
| 81-85 | 2.0 |
| 76-80 | 2.3 |
| 71-75 | 2.7 |
| 66-70 | 3.0 |
| 61-65 | 3.3 |
| 56-60 | 3.7 |
| 50-55 | 4.0 |
| 0-49 | 5.0 |

| Endziffern der Matrikelnummer | Punktzahl Klausur | Note | Endziffern der Matrikelnummer | Punktzahl Klausur | Note |
|-------------------------------|-------------------|------|-------------------------------|-------------------|------|
| 0001 | 63 | 3.3 | 4445 | 67 | 3.0 |
| 0025 | 65 | 3.3 | 4516 | 88 | 1.7 |
| 0028 | 7 | 5.0 | 4517 | 42 | 5.0 |
| 0138 | 83 | 2.0 | 4591 | 89 | 1.7 |
| 0146 | 56 | 3.7 | 4598 | 58 | 3.7 |
| 0309 | 100 | 1.0 | 4690 | 46 | 5.0 |
| 0338 | 0 | 5.0 | 4809 | 19 | 5.0 |
| 0434 | 91 | 1.3 | 4818 | 87 | 1.7 |
| 0712 | 79 | 2.3 | 4842 | 83 | 2.0 |
| 0715 | 90 | 1.7 | 4850 | 94 | 1.3 |
| 0960 | 75 | 2.7 | 4853 | 72 | 2.7 |
| 0974 | 82 | 2.0 | 4885 | 96 | 1.0 |
| 0998 | 87 | 1.7 | 5096 | 84 | 2.0 |
| 1016 | 0 | 5.0 | 5142 | 85 | 2.0 |
| 1024 | 76 | 2.3 | 5223 | 39 | 5.0 |
| 1048 | 83 | 2.0 | 5624 | 70 | 3.0 |
| 1188 | 86 | 1.7 | 5687 | 75 | 2.7 |
| 1196 | 67 | 3.0 | 5725 | 79 | 2.3 |
| 1226 | 52 | 4.0 | 5806 | 96 | 1.0 |
| 1550 | 87 | 1.7 | 5814 | 73 | 2.7 |
| 1652 | 90 | 1.7 | 5825 | 0 | 5.0 |
| 1672 | 51 | 4.0 | 5887 | 58 | 3.7 |
| 1702 | 35 | 5.0 | 5932 | 42 | 5.0 |
| 1737 | 91 | 1.3 | 5938 | 94 | 1.3 |
| 1745 | 23 | 5.0 | 6046 | 46 | 5.0 |
| 1763 | 6 | 5.0 | 6054 | 0 | 5.0 |
| 1951 | 81 | 2.0 | 6153 | 47 | 5.0 |
| 1986 | 81 | 2.0 | 6163 | 76 | 2.3 |
| 1989 | 69 | 3.0 | 6244 | 98 | 1.0 |
| 1997 | 54 | 4.0 | 6324 | 26 | 5.0 |
| 2004 | 83 | 2.0 | 6349 | 73 | 2.7 |
| 2071 | 54 | 4.0 | 6422 | 73 | 2.7 |
| 2087 | 98 | 1.0 | 6497 | 55 | 4.0 |
| 2109 | 0 | 5.0 | 6500 | 87 | 1.7 |

| | | | | | | |
|------|-----|-----|--|------|-----|-----|
| 2141 | 31 | 5.0 | | 6519 | 74 | 2.7 |
| 2214 | 34 | 5.0 | | 6527 | 71 | 2.7 |
| 2222 | 77 | 2.3 | | 6543 | 81 | 2.0 |
| 2238 | 91 | 1.3 | | 6551 | 86 | 1.7 |
| 2265 | 17 | 5.0 | | 6578 | 94 | 1.3 |
| 2273 | 50 | 4.0 | | 6586 | 91 | 1.3 |
| 2408 | 94 | 1.3 | | 6608 | 78 | 2.3 |
| 2478 | 70 | 3.0 | | 6627 | 56 | 3.7 |
| 2494 | 53 | 4.0 | | 6669 | 48 | 5.0 |
| 2505 | 5 | 5.0 | | 6756 | 83 | 2.0 |
| 2508 | 0 | 5.0 | | 6769 | 67 | 3.0 |
| 2521 | 74 | 2.7 | | 6791 | 43 | 5.0 |
| 2530 | 90 | 1.7 | | 6805 | 0 | 5.0 |
| 2564 | 91 | 1.3 | | 6828 | 78 | 2.3 |
| 2572 | 96 | 1.0 | | 6860 | 85 | 2.0 |
| 2580 | 69 | 3.0 | | 6887 | 74 | 2.7 |
| 2616 | 83 | 2.0 | | 6918 | 29 | 5.0 |
| 2629 | 66 | 3.0 | | 6926 | 53 | 4.0 |
| 2637 | 42 | 5.0 | | 6942 | 68 | 3.0 |
| 2645 | 50 | 4.0 | | 6950 | 29 | 5.0 |
| 2654 | 62 | 3.3 | | 6956 | 71 | 2.7 |
| 2696 | 55 | 4.0 | | 6969 | 70 | 3.0 |
| 2705 | 90 | 1.7 | | 6993 | 63 | 3.3 |
| 2920 | 46 | 5.0 | | 7000 | 53 | 4.0 |
| 2934 | 76 | 2.3 | | 7019 | 61 | 3.3 |
| 3144 | 75 | 2.7 | | 7027 | 100 | 1.0 |
| 3152 | 69 | 3.0 | | 7041 | 33 | 5.0 |
| 3167 | 63 | 3.3 | | 7078 | 70 | 3.0 |
| 3175 | 93 | 1.3 | | 7175 | 8 | 5.0 |
| 3213 | 61 | 3.3 | | 7213 | 79 | 2.3 |
| 3218 | 59 | 3.7 | | 7280 | 97 | 1.0 |
| 3280 | 80 | 2.3 | | 7442 | 84 | 2.0 |
| 3285 | 93 | 1.3 | | 7458 | 51 | 4.0 |
| 3323 | 95 | 1.3 | | 7469 | 72 | 2.7 |
| 3485 | 80 | 2.3 | | 7566 | 5 | 5.0 |
| 3507 | 64 | 3.3 | | 7582 | 87 | 1.7 |
| 3545 | 92 | 1.3 | | 7590 | 98 | 1.0 |
| 3652 | 72 | 2.7 | | 7752 | 90 | 1.7 |
| 3709 | 99 | 1.0 | | 7885 | 75 | 2.7 |
| 3774 | 12 | 5.0 | | 7897 | 61 | 3.3 |
| 3862 | 71 | 2.7 | | 8330 | 85 | 2.0 |
| 3951 | 91 | 1.3 | | 8554 | 71 | 2.7 |
| 3989 | 50 | 4.0 | | 8767 | 92 | 1.3 |
| 4095 | 81 | 2.0 | | 8831 | 0 | 5.0 |
| 4098 | 82 | 2.0 | | 8931 | 74 | 2.7 |
| 4109 | 88 | 1.7 | | 8961 | 66 | 3.0 |
| 4117 | 38 | 5.0 | | 9094 | 85 | 2.0 |
| 4125 | 94 | 1.3 | | 9291 | 0 | 5.0 |
| 4311 | 100 | 1.0 | | 9358 | 70 | 3.0 |
| 4350 | 46 | 5.0 | | 9755 | 82 | 2.0 |
| 4438 | 90 | 1.7 | | 9854 | 77 | 2.3 |
| | | | | 9992 | 40 | 5.0 |
| | | | | | | |

Klausurergebnisse Stochastik (n=171)



Stichprobenmittel:

65.32 Punkte

Stichproben-Standardabweichung:

26.96 Punkte